



Notes

SYMBOL	DESCRIPTION
	SURFACE MOUNTED OPEN CHANNEL SINGLE TUBE FLUORESCENT LUMINAIRE COMPLETE WITH LAMP & ELECTRONIC CONTROL GEAR TO SWANLITE LUM/ATL/SUP/298/ECG OR SIMILAR APPROVED.
	SURFACE MOUNTED OPEN CHANNEL FLUORESCENT LUMINAIRE COMPLETE WITH LAMP & ELECTRONIC CONTROL GEAR, AS SWANLITE LUM/ATL/SUP/25/SMB5.
	ROUND BULKHEAD LUMINAIRES COMPLETE WITH LAMPS & CONTROL GEAR TO SWANLITE LUM/AA/PLK/2PL18.
	SURFACE MOUNTED BULKHEAD SIMILAR OR EQUAL TO BEKA 20 SERIES 15W LED WITH BLACK TRIM RING.
	SURFACE MOUNTED, IP65 VAPOUR PROOF FLUORESCENT LUMINAIRE COMPLETE WITH 2X28W LAMPS & ELECTRONIC CONTROL GEAR, TO SWANLITE OR SIMILAR APPROVED.
	PHOTO CELL - DAYLIGHT SWITCH
	ONE LEVER TWO WAY LIGHT SWITCH
	ONE LEVER ONE WAY LIGHT SWITCH
	16A SINGLE SOCKET OUTLET WITH WHITE COVER PLATE + EURO TYPE.
	16A SINGLE DEDICATED SOCKET OUTLET WITH RED COVER PLATE
	16A DOUBLE SOCKET OUTLET WITH WHITE COVER PLATE
	DOUBLE POLE, SURFACE MOUNTED ISOLATOR
	DATA POINT
	TELEPHONE OUTLET POINT
	INTERCOM OUTLET POINT
	BELL/SIREN
	2 COMPARTMENT POWER SKIRTING
	MAIN DISTRIBUTION BOARD (INTERCOM)
	TELECOMMUNICATION DISTRIBUTION BOARD
	ELECTRICAL DISTRIBUTION BOARD
	INTERCOM DISTRIBUTION BOARD
	EARTHING OR LIGHTNING PROTECTION IN THE ROOF
	INTRUDER ALARM

FOR APPROVAL

STATUS ENGINEERS retains the copyright in all intellectual property including design and/or documents prepared in terms of this appointment for the project covered by this appointment which shall remain the design and/or intellectual property of STATUS ENGINEERS. The design and/or documents are subject to payment for the design being received. Use for any other purpose without the written consent of STATUS ENGINEERS constitutes an infringement of copyright and all rights are reserved.

REQUIRED DEPARTMENT SIGNATURES

PROJECT MANAGER: _____

ARCHITECT: _____

REGIONAL MANAGER: _____

REVISIONS:		
Rev no.	Date:	Description:

Signed by Consultant (Partner/Director)

Signature _____ Date _____



P.O.Box 2484
Newcastle 2340
Tel: (034) 312 5767
Fax: (034) 312 9879
e-mail: newcastle@sinicengineers.co.za



KWABULAWAYO
HIGH
SCHOOL

Drawing description:

FLOOR PLANS
BLOCK D, E & F
LIGHTING & SMALL
POWER LAYOUT

Designed by:	Drawn by:	Checked:
F.NEL	D.SINGH	

Scale/s:	Date:	Revision:
1:50	5 September 2022	

Consultant Drawing number:

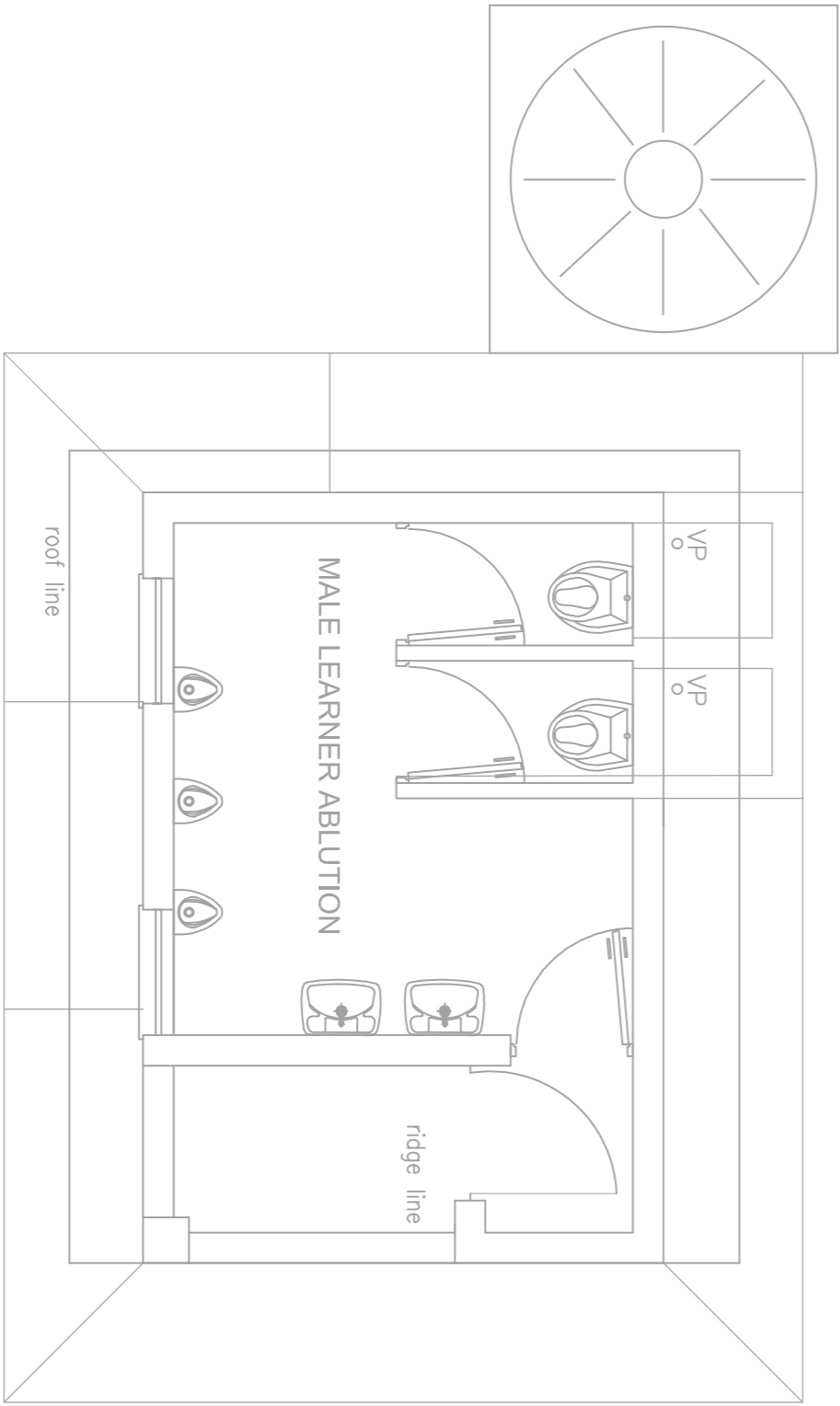
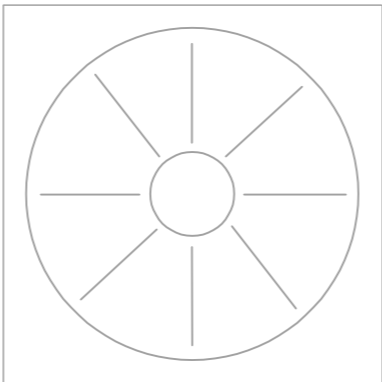
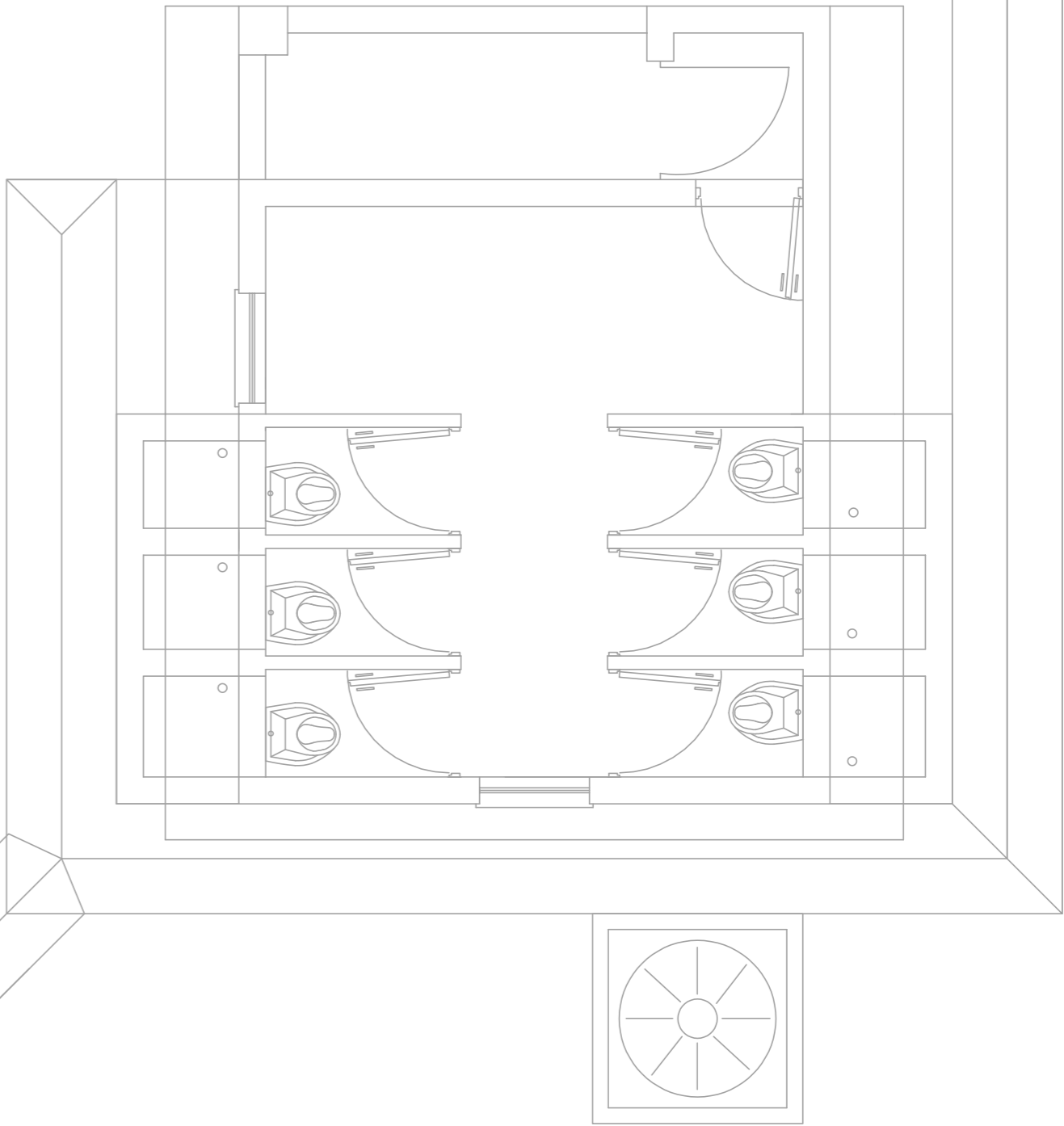
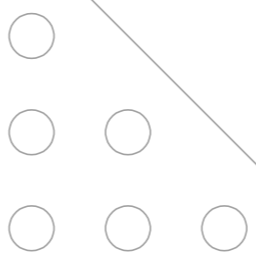
300238-20-L-E04

A0

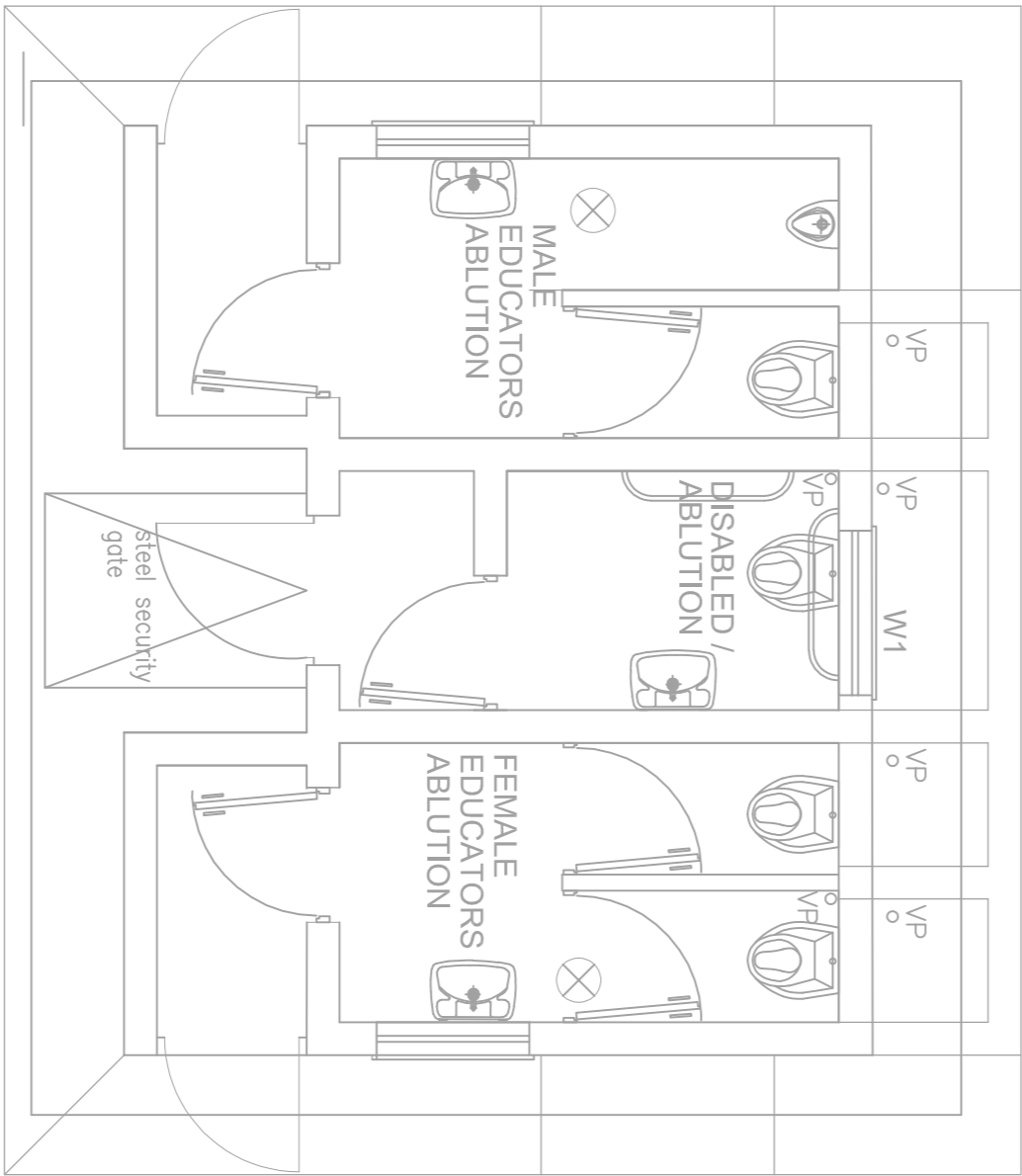
LEGEND

SYMBOL	DESCRIPTION
	SURFACE MOUNTED OPEN CHANNEL SINGLE TUBE FLUORESCENT LUMINAIRE COMPLETE WITH LAMP & ELECTRONIC CONTROL GEAR TO SWANLITE LUM/ATL/SUP/298/ECG OR SIMILAR APPROVED.
	SURFACE MOUNTED OPEN CHANNEL FLUORESCENT LUMINAIRE COMPLETE WITH LAMP & ELECTRONIC CONTROL GEAR, AS SWANLITE LUM/ATL/SUP/25/SMB5.
	ROUND BULKHEAD LUMINAIRES COMPLETE WITH LAMPS & CONTROL GEAR TO SWANLITE LUM/AA/PLK/2PL18.
	SURFACE MOUNTED BULKHEAD SIMILAR OR EQUAL TO BEKA 20 SERIES 15W LED WITH BLACK TRIM RING.
	SURFACE MOUNTED, IP65 VAPOUR PROOF FLUORESCENT LUMINAIRE COMPLETE WITH 2X28W LAMPS & ELECTRONIC CONTROL GEAR, TO SWANLITE OR SIMILAR APPROVED.
	PHOTO CELL - DAYLIGHT SWITCH
	ONE LEVER TWO WAY LIGHT SWITCH
	ONE LEVER ONE WAY LIGHT SWITCH
	16A SINGLE SOCKET OUTLET WITH WHITE COVER PLATE + EURO TYPE.
	16A SINGLE DEDICATED SOCKET OUTLET WITH RED COVER PLATE
	16A DOUBLE SOCKET OUTLET WITH WHITE COVER PLATE
	DOUBLE POLE, SURFACE MOUNTED ISOLATOR
	DATA POINT
	TELEPHONE OUTLET POINT
	INTERCOM OUTLET POINT
	BELL/SIREN
	2 COMPARTMENT POWER SKIRTING
	MAIN DISTRIBUTION BOARD (INTERCOM)
	TELECOMMUNICATION DISTRIBUTION BOARD
	ELECTRICAL DISTRIBUTION BOARD
	INTERCOM DISTRIBUTION BOARD
	EARTHING OR LIGHTNING PROTECTION IN THE ROOF
	INTRUDER ALARM

BLOCK D – NEW LEARNER, 6xFEMALE
ABLUTIONS



BLOCK E – MALE ABLUTIONS



BLOCK F – NEW EDUCATOR,
2xFEMALE, 1xMALE, 1xDISABLED
ABLUTIONS